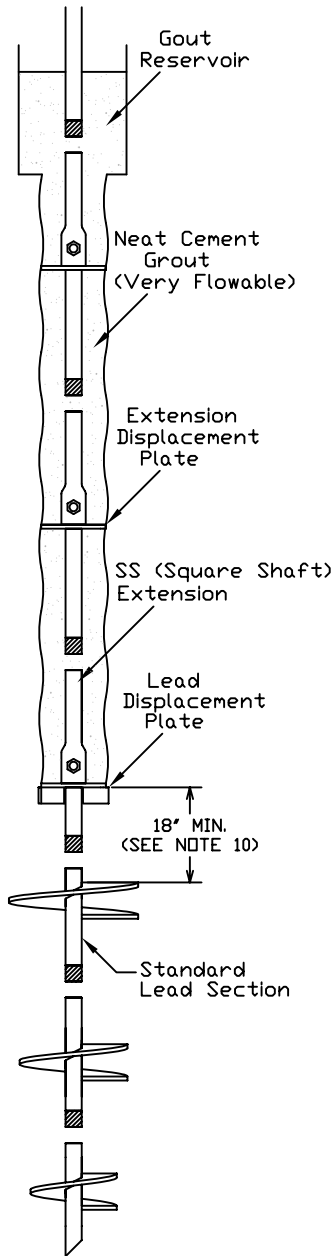
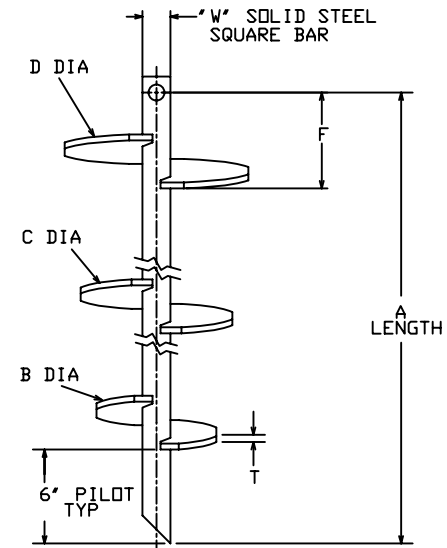


# HELICAL PULLDOWN<sup>®</sup> MICROPILE LEAD SECTIONS



TYPICAL UNCASD APPLICATION

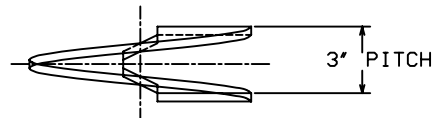
LEAD SECTION										
CAT. NO.	SHAFT MATERIAL	TORQUE RATING (FT-LB)	A	B	C	D	F	W	T	HELIX STEEL GRADE
C150-0397	SS5	5500	82.25'	8'	10'	12'	22.25'	1.5'	.375'	50
C150-0398	SS5	5500	123'	10'	12'	14'	51'	1.5'	.375'	50
C150-0399	SS5	5500	123'	12'	14'	16'	39'	1.5'	.375'	50
C150-0400	SS150	7000	82.25'	6'	8'	10'	34.25'	1.5'	.375'	80
C150-0401	SS175	11000	83'	8'	10'	12'	23'	1.75'	.375'	80
C150-0402	SS175	11000	129'	10'	12'	14'	57'	1.75'	.375'	80
C150-0403	SS200	16000	85'	8'	10'	12'	25'	2.0'	.5'	80
C150-0404	SS200	16000	131'	10'	12'	14'	59'	2.0'	.5'	80



TRIPLE HELIX LEAD SECTION

### ==NOTES==

1. HOT DIP GALVANIZED PER ASTM A153-(LATEST REVISION).
2. LEAD AND EXTENSION SECTION LENGTHS AND HELIX SPACINGS ARE NOMINAL.
3. NOMINAL SPACING BETWEEN HELIX PLATES IS THREE TIMES THE DIAMETER OF THE LOWER HELIX.
4. SHAFT MATERIAL-HOT ROLLED ROUND-CORNERED SQUARE (RCS) SOLID STEEL BARS ASTM A29 MINIMUM YIELD STRENGTH=70 KSI (SS5); 90 KSI (SS150, SS175, SS200).
5. HELIX MATERIAL-HOT ROLLED LOW CARBON STEEL SHEET, STRIP, OR PLATE PER ASTM A572, OR A1018, OR A656.
6. MANUFACTURER TO HAVE IN EFFECT INDUSTRY RECOGNIZED WRITTEN QUALITY CONTROL FOR ALL MATERIALS AND MANUFACTURING PROCESSES.
7. ALL WELDING TO BE DONE BY WELDERS CERTIFIED UNDER SECTION 5 OF THE AWS CODE D1.1.
8. REFER TO SA150-0047 FOR SS5 PLAIN EXTENSION AND TERMINATIONS.  
REFER TO SA150-0144 FOR SS150 PLAIN EXTENSION AND TERMINATIONS.  
REFER TO SA150-0183 FOR SS175 PLAIN EXTENSION AND TERMINATIONS.  
REFER TO SA150-0330 FOR LEAD AND EXTENSION DISPLACEMENT PLATES.  
REFER TO SA150-0338 FOR CASD LEAD AND EXTENSION DISPLACEMENT PLATES.
9. HELICES ON THE C150-0397, C150-0398, AND C150-0399 HAVE A SHARPENED LEADING EDGE.
10. STANDARD SQUARE SHAFT LEAD SECTIONS CAN BE USED PROVIDED HELIX TO LEAD DISPLACEMENT PLATE SPACING OF 18" MIN. IS MAINTAINED.



HELIX MUST BE FORMED BY MATCHING METAL DIE  
(SIDE VIEW OF TRUE HELICAL FORM)

<p>CHANCE</p> <p><small>CONFIDENTIAL: THIS DRAWING AND ITS CONTENTS ARE CONFIDENTIAL AND THE EXCLUSIVE PROPERTY OF HUBBELL POWER SYSTEMS. NO PUBLICATION, DISTRIBUTION OR COPIES MAY BE MADE WITHOUT THE WRITTEN CONSENT OF HUBBELL POWER SYSTEMS. HUBBELL POWER SYSTEMS UNPUBLISHED ALL RIGHTS RESERVED UNDER THE COPYRIGHT LAWS.</small></p>	<p><b>HUBBELL POWER SYSTEMS</b></p> <p>POWER SYSTEMS, INC.</p> <p>TITLE <b>HELICAL PULLDOWN MICROPILE</b></p> <table border="1" style="width: 100%; border-collapse: collapse;"> <tr> <td style="width: 25%;">SIZE</td> <td style="width: 25%;">DWG NO.</td> <td style="width: 25%;">CAT / PART / ASSY NO.</td> <td style="width: 25%;">REV</td> </tr> <tr> <td>SC</td> <td>SA150-0397</td> <td>SEE CHART</td> <td>B</td> </tr> </table> <p>DO NOT SCALE THIS DRAWING    DRN BY KSH    DATE 4/26/05    SHEET 1/1</p>	SIZE	DWG NO.	CAT / PART / ASSY NO.	REV	SC	SA150-0397	SEE CHART	B
SIZE	DWG NO.	CAT / PART / ASSY NO.	REV						
SC	SA150-0397	SEE CHART	B						