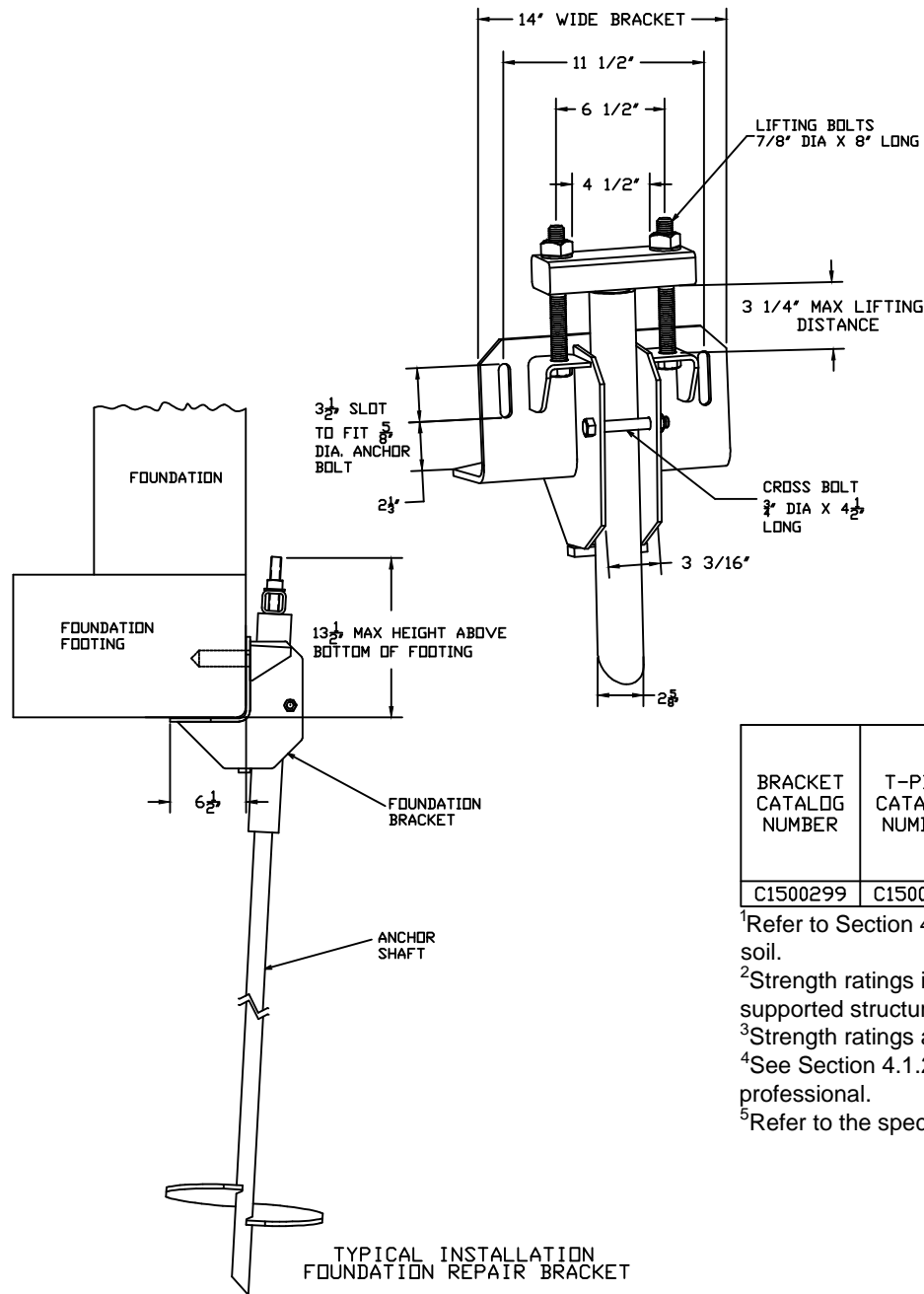


STANDARD UNDERPINNING BRACKET AND T-PIPE FOR CHANCE TYPE SS175 HELICAL PILES

-NOTES-



1. HOT DIP GALVANIZE PER ASTM A153-(LATEST REVISION).
2. ASSEMBLE COMPLETE AS SHOWN IN SIDE VIEW.
3. THE NUTS ON THE LIFTING BOLTS AND CROSS BOLTS MUST BE TIGHTENED TO ACHIEVE A SNUG-TIGHT CONDITION AS DEFINED IN SECTION J3 OF AISC 360-05; AS A MINIMUM, NUTS MUST BE TIGHTENED 1/4 TURN BEYOND HAND TIGHT CONDITION. DO NOT EXCEED 165 FT-LB OF TORQUE ON LIFTING BOLTS DURING STABILIZATION OR LOAD LOCK OFF.
4. RECOMMENDED ANCHOR SHAFT CUTOFF LEVEL ABOVE THE BOTTOM OF THE FOOTING IS 10" TO 11" FOR MAXIMUM LIFT DISTANCE.
5. FOR DETAILED INSTALLATION INSTRUCTIONS, READ CHANCE BULLETIN 01-9812.
6. MATERIAL SPECIFICATIONS:
 BRACKET BODY : PER ASTM A36 AND ASTM A570 GR. 50.
 T-PIPE TUBE : HOT ROLLED MECHANICAL TUBING PER ASTM A500.
 LIFTING BOLTS : HEX HEAD BOLT PER ASTM A325, TYPE 1.
 CROSS BOLT : HEX HEAD BOLT PER ASTM A325, TYPE 1..
7. SEE ICC-ES EVALUTATION SERVICE, INC., EVALUATION REPORT NO. ESR-2794 FOR STRENGTH VALUES AND/OR CONDITIONS OF USE CONCERNING INFORMATION PRESENTED ON THIS DRAWING.

BRACKET CATALOG NUMBER	T-PIPE CATALOG NUMBER	PILE MODEL	ASD ALLOWABLE STRENGTH IN AXIAL COMPRESSION (kips) ^{1,2,3,4}					
			2500 psi CONCRETE ⁵		3000 psi CONCRETE ⁵		4000 psi CONCRETE ⁵	
			FIRM SOIL	SOFT SOIL	FIRM SOIL	SOFT SOIL	FIRM SOIL	SOFT SOIL
C1500299	C1500488	SS175	36.8	27.7	41.7	30.2	49.5	30.2

¹Refer to Section 4.1.3 of ESR-2794 for descriptions of fixed condition, pinned condition, soft soil and firm soil.

²Strength ratings include an allowance for corrosion over a 50-year service life and presume the supported structure is braced in accordance with IBC Section 1808.2.5.

³Strength ratings apply to the specific bracket, T-pipe and anchor/pile models listed.

⁴See Section 4.1.2 of ESR-2794 for applicable limit states that must be evaluated by a registered design professional.

⁵Refer to the specified compressive strength of concrete at 28 days.

ICC-ES
LISTED

ESR-2794

CHANCE TOLERANCE CHART	HUBBELL POWER SYSTEMS
TITLE BRACKET, STANDARD UNDERPINNING BRACKET	
CONFIDENTIAL: THIS DRAWING AND ITS CONTENTS ARE CONFIDENTIAL AND THE EXCLUSIVE PROPERTY OF HUBBELL POWER SYSTEMS. NO PUBLICATION, DISTRIBUTION OR COPIES MAY BE MADE WITHOUT THE WRITTEN CONSENT OF HUBBELL POWER SYSTEMS. HUBBELL POWER SYSTEMS UNPUBLISHED. ALL RIGHTS RESERVED UNDER THE COPYRIGHT LAWS.	
SIZE: DWG NO. C SA150-0298	CAT / PART / ASSY NO. SA150-0298
DO NOT SCALE THIS DRAWING	DRN BY: DMP DATE: 10/10/12 SHEET: 1/1