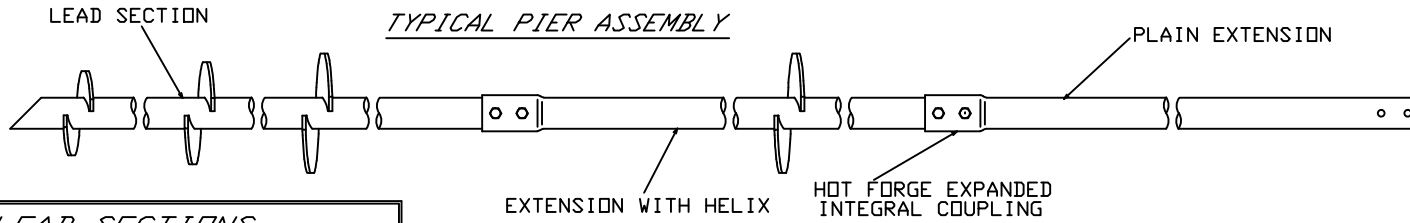


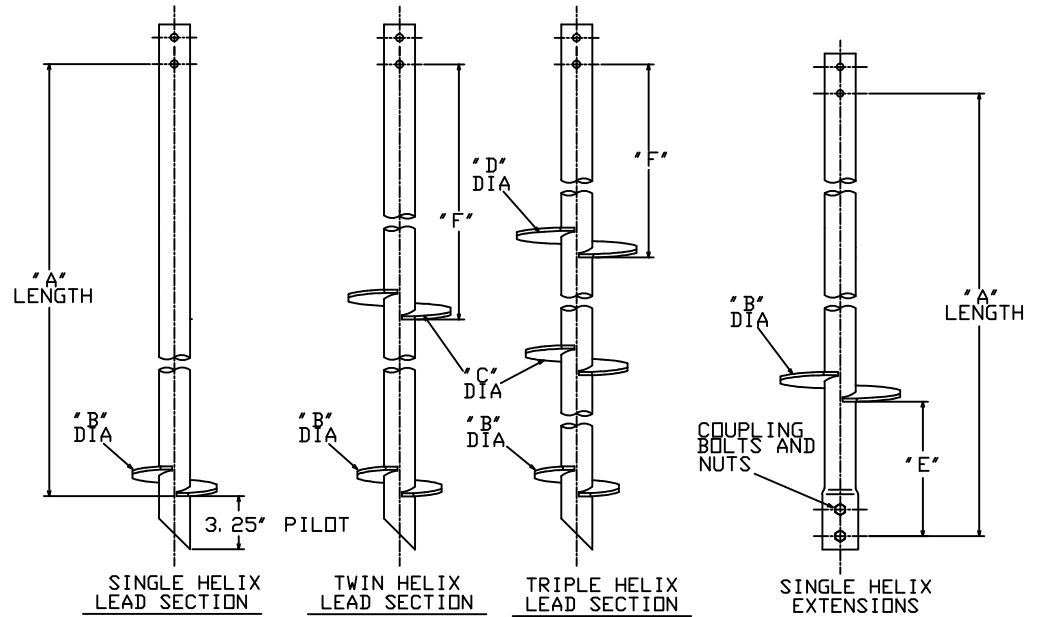
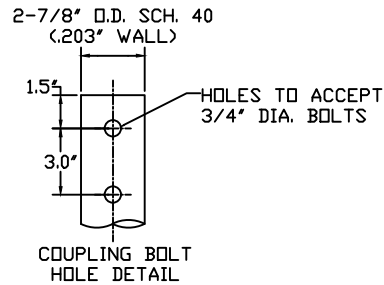
RS2875.203 MULTI-HELIX LEADS

TORQUE STRENGTH RATING-5,500 FT-LB
 ULTIMATE CAPACITY* (TENSION/COMPRESSION) 49 KIP
 *BASED ON TORQUE FACTOR OF (Kt)=9



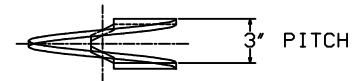
LEAD SECTIONS					
CAT. NO.	"A"	"B"	"C"	"D"	"F"
C2784507	76'	10'	12'	14'	10'
C2784511	76'	14'			
C2784505	57'	10'	12'		27'
C2784514	57'	8'	10'	12'	5'
C2784506	76'	10'	12'		46'
C2784503	57'	12'			
C2784504	57'	10'			
C2784515	118'	14'			
C2784512	57'	8'	10'		33'
C2784509	76'	12'			
C2784513	76'	8'	10'		52'

HELICAL EXTENSIONS			
CAT. NO.	"A"	"B"	"E"
C2784501	63'	14'	20'



-NOTES-

- HOT DIP GALVANIZED PER ASTM 153-(LATEST REVISION)
- LEAD AND EXTENSION SECTION LENGTHS AND HELIX SPACINGS ARE NOMINAL,
- NOMINAL SPACING BETWEEN HELIX PLATES IS THREE TIMES THE DIAMETER OF THE LOWER HELIX.
- HELIX MATERIAL LOW CARBON STEEL MEETING THE GENERAL REQUIREMENTS OF AISI, OR ASTM A572, A656, OR A1018; 3/8" THICK.
- PIPE SHAFT MATERIAL 2.5" NOMINAL, SCHEDULE 40 WALL THICKNESS PER ASTM A500 GRADE B/C, MINIMUM YIELD STRENGTH OF PIPE SHAFT IS 50 KSI.
- MANUFACTURER TO HAVE IN EFFECT INDUSTRY RECOGNIZED WRITTEN QUALITY CONTROL FOR ALL MATERIALS AND MANUFACTURING PROCESSES.
- ALL WELDING TO BE DONE BY WELDERS CERTIFIED UNDER SECTION 5 OF THE AWS CODE D1.1.
- FOR PLAIN EXTENSIONS REFER TO DRAWING SA278-4500.



HELIX MUST BE FORMED BY MATCHING METAL DIE
 (SIDE VIEW)

CHANCE HELICAL	HUBBELL POWER SYSTEMS		
	TITLE RS2875.203 MULTI-HELIX LEADS AND HELICAL EXTENSIONS		
CONFIDENTIAL: THIS DRAWING AND ITS CONTENTS ARE CONFIDENTIAL AND THE EXCLUSIVE PROPERTY OF HUBBELL POWER SYSTEMS. NO PUBLICATION, DISTRIBUTION OR COPIES MAY BE MADE WITHOUT THE WRITTEN CONSENT OF HUBBELL POWER SYSTEMS. HUBBELL POWER SYSTEMS UNPUBLISHED ALL RIGHTS RESERVED UNDER THE COPYRIGHT LAWS.	SIZE DWG. NO. SCISA2784507	CAT / PART / ASSY NO. SEE CHART	REV B
DO NOT SCALE THIS DRAWING	DRN BY KSH	DATE 12/29/09	SHEET 1/1