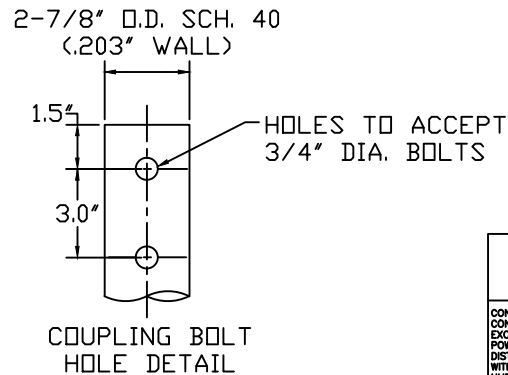
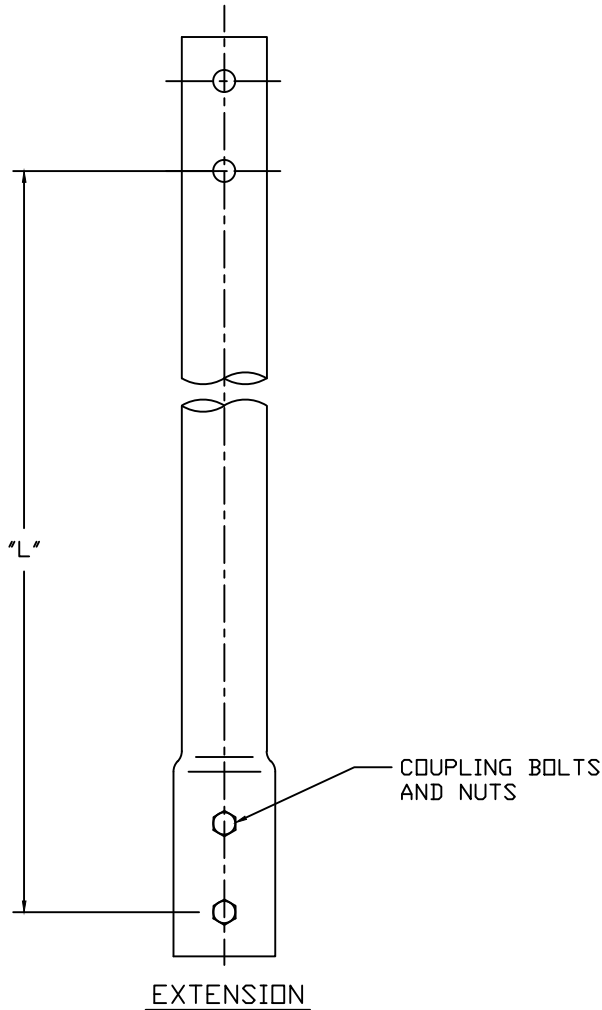


RS2875.203 EXTENSIONS

TORQUE STRENGTH RATING-5,500 FT-LB
 ULTIMATE CAPACITY* (TENSION/COMPRESSION) 49 KIP
 *BASED ON A TORQUE FACTOR OF (Kt)=9

-NOTES-

1. HOT DIP GALVANIZED PER ASTM 153-(LATEST REVISION) C278-4500NG, AND C278-4700NG ARE NON-GALVANIZED.
2. EXTENSION SECTION LENGTHS ARE NOMINAL.
3. PIPE SHAFT MATERIAL 2.5" NOMINAL, SCHEDULE 40 WALL THICKNESS PER ASTM A500 GRADE B/C, MINIMUM YIELD STRENGTH OF PIPE SHAFT IS 50 KSI.
4. COUPLING BOLTS: 3/4" DIAMETER X 4.25" LONG HEX HEAD PER SAE J429 GRADE 5.
5. REFER TO SA278-4510 AND SA278-4510X37 FOR LEAD SECTION DRAWINGS.
6. MANUFACTURER TO HAVE IN EFFECT INDUSTRY RECOGNIZED WRITTEN QUALITY CONTROL FOR ALL MATERIALS AND MANUFACTURING PROCESSES.
7. EXTENSIONS ARE FABRICATED WITH A HOT FORGED EXPANDED INTEGRAL COUPLING CONNECTION ON ONE END.



| CATALOG NUMBER | DESCRIPTION | "L" |
|----------------|--------------------------------------|------|
| C278-4300 | RS2875.203 PIPE SHAFT EXT. | 30" |
| C278-4500 | RS2875.203 PIPE SHAFT EXT. | 57" |
| C278-4500NG | RS2875.203 PIPE SHAFT EXT. NON-GALV. | 57" |
| C278-4700 | RS2875.203 PIPE SHAFT EXT. | 78" |
| C278-4700NG | RS2875.203 PIPE SHAFT EXT. NON-GALV. | 78" |
| C278-41000 | RS2875.203 PIPE SHAFT EXT. | 114" |

| | |
|---|---|
| CHANCE HELICAL | HUBBELL POWER SYSTEMS POWER SYSTEM, INC. |
| TITLE RS2875.203 PILE, EXTENSION | |
| CONFIDENTIAL: THIS DRAWING AND ITS CONTENTS ARE CONFIDENTIAL AND THE EXCLUSIVE PROPERTY OF HUBBELL POWER SYSTEMS. NO PUBLICATION, DISTRIBUTION OR COPIES MAY BE MADE WITHOUT THE WRITTEN CONSENT OF HUBBELL POWER SYSTEMS. HUBBELL POWER SYSTEMS UNPUBLISHED. ALL RIGHTS RESERVED UNDER THE COPYRIGHT LAWS. | SIZE DWG NO. CAT / PART / ASSY NO. REV SC SA278-4500 SEE CHART D |
| DO NOT SCALE THIS DRAWING | DRN BY KSH DATE 9/6/05 SHEET 1/1 |